



# Porto. CARD

The key to the best Porto has to offer

**Porto. Card** is your all access pass to the city's top attractions, exclusive discounts and transportation. Offering over **150 benefits and discounts**, unbeatable prices and convenience, Porto. Card is the perfect companion for travellers who want to make the most of their visit.

Unlock the best of the city with the Porto. Card.

## PORTO. CARD BENEFITS:



• **Free Access:** Free access to 5 museums and 50% discount on visits to 10 monuments



• **Exclusive Discounts:** Save up to 50% on tours, restaurants, shops and cultural activities



• **Flexibility:** Decide for how long you want to use your card, with or without the transport option



• **Unlimited use of Public Transport:** Access to unlimited rides on the city's metro, urban trains and buses, within the Metropolitan Area

## DISCOUNTS ON THE CITY'S TOP ATTRACTIONS AND EXPERIENCES

- Casa do Infante - City Museum
- Palácio da Bolsa
- Casa da Música
- Serralves Museum and Park
- Clérigos Tower
- Sé Cathedral
- Port Wine Cellars
- Port Wine Tastings
- Douro River Cruise
- Tours & Sightseeing

## CHOOSE YOUR PORTO. CARD

Porto.CARD prices vary according to the duration of your stay and whether you wish to use public transport. Available in a variety of options, Porto. Card adjusts perfectly to all your needs.

Days	Without Public Transport	With Public Transport (Unlimited use)
<b>1 Day (24h)</b>	<b>7,50€</b>	<b>15€</b>
<b>2 Days (48h)</b>	<b>12€</b>	<b>27€</b>
<b>3 Days (72h)</b>	<b>16€</b>	<b>32€</b>
<b>4 Days (96h)</b>	<b>18€</b>	<b>41,50€</b>

## FAQ – FREQUENTLY ASKED QUESTIONS

### Where can I get my Porto. Card?

You can buy the Porto. Card online and pick it up at the tourism offices located at Francisco Sá Carneiro Airport and Porto Cathedral. If you prefer, you can also make the purchase directly at the tourism offices, Porto Welcome Center or at the Trindade Tourism Office.

### How long is the Porto. Card valid for?

The Porto. Card is valid for **1 day (24 hours), 2 days (48 hours), 3 days (72 hours), and 4 days (96 hours)**, depending on the chosen option. The card is activated from the date and time marked on the card.

### How to use the Porto. Card with the transport option?

The Porto. Card is activated from the date and time marked on the card. Just present the Porto. Card to partners to enjoy free entries or discounts. For public transport access, the Andante Tour ticket is activated when you first validate your ticket. You must validate the Andante Tour ticket when starting your trip, and whenever you change lines or vehicles.

### Important Tips:

- For the Porto.CARD for 2 and 4 days, you will receive two transport tickets. We recommend that you save one for your last day, in order to include the return trip to the airport.
- For the 2-day option with transport you will receive two tickets for 24 hours. Use one ticket for the first 24 hours and the second ticket for the second day (the next 24 hours). Each ticket is valid for 24 hours from the first validation. Do not validate both tickets on the same day.
- For the 4-day option with transport you will receive a ticket for 24 hours and a ticket for 72 hours. Use one ticket for the first 72 hours and the second ticket on the last day (the last 24 hours). Each ticket is valid from the first validation (72h+24h). Do not validate both tickets on the same day.

### Is Porto. Card different from the Andante Tour ticket?

Yes. The Andante Tour ticket only provides access to public transport. The Porto. Card includes free access and various discounts on many attractions and, when selected, the Andante Tour ticket. This card gives you unlimited access to public transport (STCP buses, metro, and trains to Paredes, Paramos, Vila das Aves, and Lousado).

### Does the Porto. Card work on all public transport options?

The Porto. Card includes unlimited access to the metro, urban trains, and STCP buses within the Porto Metropolitan Area, but does not include the tram or the cable car. Other transports with discount:

---

## **Anetours- Transfer - 15% discount**

---

## **EFun Tours - Private Transfer - 15% discount**

---

## **CP Comboios de Portugal - 10% Touristic Ticket for Aveiro, Braga, Guimarães, and Marco de Canaveses**

---

### **Are there any discounts for children or seniors?**

The Porto. Card has a single price for all ages. Discounts are available at various attractions but cannot be combined with other offers.

### **Does Porto. Card offer group deals?**

Yes, groups can make the most of their visit with the Porto. Card, especially large groups. If you order 20 or more cards, you get a 10% discount. To get this offer you have to contact the Official Tourist Information Office of Porto Tourism or send an email to [info@visitportoandnorth.travel](mailto:info@visitportoandnorth.travel).

### **Does the Porto. Card offer any other benefits?**

Eurorail, Interrail Pass, ACP/ARC, Clube Remax users, and students and Porto University members (groups of 5 or more people) can get a discount when buying the Porto. Card. The discount ranges from 10% to 50%, depending on the partner deal and the type of Porto. Card they wish to buy.

Additionally, when purchasing 20 or more units, you will automatically receive a 10% discount. Purchases made by tour operators and travel agencies also qualify for a 10% discount when buying the Porto. Card.

To benefit from the discount, you should go to one of the Official Tourism Offices or request it by email at [info@visitportoandnorth.travel](mailto:info@visitportoandnorth.travel).

## **TERMS AND CONDITIONS**

1. Cards are personal and non-transferable.
2. A card's validity starts from the date written on the back of the card.
3. You just need to show your Porto.CARD at our member institutions to benefit from free tickets and discounts. Transport tickets for 1, 2, 3, and 4 days must be validated in each mode of transport and for each journey at the start of the trip. When you change lines or modes of transport, scan your card on the ticket validators in the stations or, for buses, on the ticket validators as you board. Your card can only be used once for each free entrance or discount opportunity. You can use public transport as much as you wish while the card is valid.  
**TRAM NOT INCLUDED.**

4. On holidays and days off, some partners may be closed, so check before you go. You can file a complaint regarding your Porto. Card in person, at any partner desk, or at the Porto Official Tourism Offices. You must confirm that you have received instructions on the QR Code (where you access the guide) and card when you buy the Porto. Card, under penalty of non-complaint.

5. In case of complaint or if you need any information about public transport, please contact: **Linha Andante 808 200 444/ +351 226 158 151, [cliente@linhaandante.com](mailto:cliente@linhaandante.com)**

The information on this document can be changed. We suggest confirmation at the places mentioned above or at the Porto Official Tourism Offices. Check our return policy.

6. Use the Andante Tour ticket for free and unlimited access to all public transportation during the card's validity period. The ticket is valid from the first validation (24 hours or 72 hours).



# BENEFITS AND DISCOUNTS ALL OVER THE CITY



## MUSEUMS



Reservatório –  
City Museum

### ↘ FREE ACCESS

Rua Gomes Eanes  
de Azurara, 122  
Parque da Pasteleira



Casa Museu Marta  
Ortigão Sampaio

### ↘ FREE ACCESS

Rua Nossa Senhora  
de Fátima, 291



Casa do Infante –  
City Museum

### ↘ FREE ACCESS

Rua da Alfândega, 10



Extensão do  
Romantismo –  
City Museum

### ↘ FREE ACCESS

Rua de Entre-Quintas, 220



Paper Money  
Museum

### ↘ FREE ACCESS

Av. da Boavista, 4245



17.56 Museu  
da 1ª demarcação  
do Douro – Real  
Companhia Velha

### ↘ 50% DISCOUNT

Av. Ramos Pinto, 118  
Vila Nova de Gaia



Biodiversity  
Gallery

### ↘ 50% DISCOUNT

Rua do Campo Alegre, 1191



Museu do Carro  
Elétrico

### ↘ 50% DISCOUNT

Alameda Basílio Teles, 51



Museum of  
Transport and  
Communication

### ↘ 50% DISCOUNT

Rua Nova da Alfândega



Porto Military  
Museum

### ↘ 50% DISCOUNT

Rua do Heroísmo, 329



Soares dos Reis  
National Museum

### ↘ 50% DISCOUNT

Rua D. Manuel II, 44



House of Filigree

### ↘ 20% DISCOUNT

Rua do Almada, 10



MMIPO -  
Misericórdia  
do Porto Museum

### ↘ 30% DISCOUNT

Rua das Flores, 15



Pharmacy  
Museum

### ↘ 20% DISCOUNT

Rua Engº Ferreira Dias, 728





### Serralves Park and Museum of Contemporary Art

↘ **20% DISCOUNT**  
Rua de D. João de Castro, 210



### Porto Puppet Museum

↘ **2€ DISCOUNT**  
Rua de Belmonte, 61



### Clérigos Tower and Church

↘ **25% DISCOUNT**  
on individual day ticket  
Rua S. Filipe Nery



### Porto Cathedral

↘ **1€ DISCOUNT**  
Terreiro da Sé



### MASA - Museum of Sacred Art and Archeology

↘ **30% DISCOUNT**  
Largo do Colégio



### Casa da Música

↘ **25% DISCOUNT**  
on guided tours  
Av. da Boavista, 604-610



### Paço Episcopal

↘ **25% DISCOUNT**  
Terreiro da Sé



### Church of Santa Clara

↘ **1€ DISCOUNT**  
Largo 1º de Dezembro



### Casa de São Roque

↘ **15% DISCOUNT**  
Rua São Roque da lameira, 2092



### Palácio da Bolsa

↘ **25% DISCOUNT**  
Rua Ferreira Borges, 101



### FC Porto Museum

**10% discount on tour museum + stadium**  
Via Futebol Clube do Porto



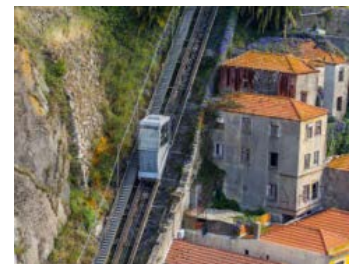
### Church of Saint Francisco

↘ **25% DISCOUNT**  
Rua do Infante D. Henrique, 95



### Ordem do Carmo

↘ **20% DISCOUNT**  
Rua do Carmo, 4050-164



### Funicular dos Guindais

↘ **25% DISCOUNT**  
on one ride  
Av. Gustavo Eiffel





### Gaia Cable Car

↘ **10% DISCOUNT**  
Rua Rocha Leão  
Vila Nova de Gaia



### Cooltour Oporto

GUIDED TOURS OR  
WALKING TOURS  
↘ **15% DISCOUNT**  
☎ +351 910 587 362



### Tuk Tour

TUK TUK  
↘ **10% DISCOUNT**  
☎ +351 915 094 443



### Top Bike Tour

GUIDED BIKE TOURS  
↘ **15% DISCOUNT**  
folding and city bikes  
☎ +351 915 316 999



### Meet Me at Porto

GUIDED TOURS OR  
WALKING TOURS  
↘ **20% DISCOUNT**  
☎ +351 919 766 779



### Living Tours

GUIDED TOURS  
↘ **15% DISCOUNT**  
on minibus tours  
☎ +351 228 320 992



### Oporto Sensations Tours (Gerês / Surf)

NATURE AND ADVENTURE  
CIRCUITS  
↘ **15% DISCOUNT**  
☎ +351 919 018 272



### City Sightseeing Portugal

SIGHTSEEING BUS  
↘ **25% DISCOUNT**  
(ticket on board) - bus only  
☎ +351 222 006 418



### Oporto & Douro Moments

GUIDED TOURS, WALKING  
TOURS OR NATURE AND  
ADVENTURE CIRCUITS  
↘ **20% DISCOUNT**  
☎ +351 919 766 779



### Bluedragon

SEGWAY TOURS,  
WALKING TOURS AND  
GUIDED BIKE TOURS  
↘ **15% DISCOUNT**  
☎ +351 912 562 190



### Oporto Sensations Tours

GUIDED TOURS  
↘ **15% DISCOUNT**  
on wine tours  
☎ +351 919 018 272



### Gray Line Porto Sightseeing Tours

SIGHTSEEING BUS  
↘ **20% DISCOUNT**  
(ticket on board) - bus only  
☎ +351 220 431 006



### ANETours

GUIDED TOURS  
↘ **15% DISCOUNT**  
Regular and private tours  
☎ +351 229 942 667



### Tuking People

TUK TUK  
↘ **15% DISCOUNT**  
☎ +351 915 447 537



### Biclas & Triclas

GUIDED BIKE TOURS  
↘ **15% DISCOUNT**  
☎ +351 933 658 008



### Ecotours Portugal

WALKING TOURS  
↘ **21% DISCOUNT**  
☎ +351 226 191 095





### Nature and Adventure Circuits

**➤ 16% DISCOUNT**  
on a 3 days tour to Douro  
☎ +351 226 191 095



### Quinta de Santa Cristina (4x4 Tour)

**NATURE AND ADVENTURE CIRCUITS**  
**➤ 10% DISCOUNT**  
on 1-day circuits  
☎ +351 912 527 396



### Douro Azul

**BRIDGES CRUISE**  
**➤ 20% DISCOUNT**  
Avenida Ramos Pinto  
(Quiosque da Olá)  
Vila Nova de Gaia



### Tomaz do Douro

**6 BRIDGES CRUISE**  
**➤ 20% DISCOUNT**  
**1 DAY CRUISE**  
**➤ 15% DISCOUNT**  
Praça da Ribeira, 5



### Tomaz do Douro - Xtreme Jet (Jet Boating)

**NATURE AND ADVENTURE CIRCUITS**  
**➤ 15% DISCOUNT**  
(April to October)  
☎ +351 222 081 935



### Comboios de Portugal - Comboio turístico 1 e 3 dias

**TRAIN**  
**➤ 10% DISCOUNT**  
Buy at CP ticket office



### Manos do Douro

**BRIDGES CRUISE**  
**➤ 20% DISCOUNT**  
Avenida de Diogo Leite, 39



### Fish Surf School

**SURF**  
**➤ 15% DISCOUNT**  
Praceta Manuel Carlos  
Seabra Monteiro, 13  
Praia de Matosinhos



### Oporto Adventure Tours (Gerês | Canyoning | Rafting)

**NATURE AND ADVENTURE CIRCUITS**  
**➤ 10% DISCOUNT**  
☎ +351 915 781 103



### Rota do Douro

**BRIDGES CRUISE OR 1 DAY CRUISE**  
**➤ 20% DISCOUNT**  
Avenida de Diogo Leite, 438  
Vila Nova de Gaia



### Surfaventura/ Surf School

**SURF**  
**➤ 15% DISCOUNT**  
Praia de Matosinhos



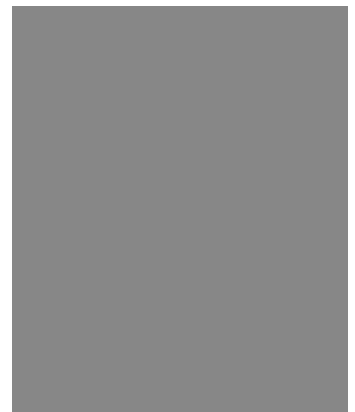
### Douro Acima

**BRIDGES CRUISE**  
**➤ 20% DISCOUNT**  
Rua Canastreiros, 40-42



### Feel Douro

**YACHT**  
**➤ 10% DISCOUNT**  
Douro Marina  
Vila Nova de Gaia





## WINES AND CELLARS



### Real Companhia Velha

PORT WINE CELLARS  
↘ **50% DISCOUNT**

Advance booking required  
Rua Azevedo Magalhães, 314  
Vila Nova de Gaia



### Caves Poças

PORT WINE CELLARS  
↘ **25% DISCOUNT**

Advance booking required  
Rua Visconde das Devesas, 168  
Vila Nova de Gaia



### Burmester

PORT WINE CELLARS  
↘ **10% DISCOUNT**

on visits and wine purchases  
(November to March) -  
Advance booking required  
Largo Luiz, 1  
Vila Nova de Gaia



### Ferreira

PORT WINE CELLARS  
↘ **30% DISCOUNT**

FROM NOVEMBER TO MARCH  
↘ **10% DISCOUNT**  
FROM APRIL TO OCTOBER  
Advance booking required  
Avenida Ramos Pinto, 70  
Vila Nova de Gaia



### Sandeman

PORT WINE CELLARS  
↘ **30% DISCOUNT**

FROM NOVEMBER TO MARCH  
↘ **10% DISCOUNT**  
FROM APRIL TO OCTOBER  
Advance booking required  
Largo Miguel Bombarda, 3  
Vila Nova de Gaia



### Calém

PORT WINE CELLARS  
↘ **10% DISCOUNT**

on visits and wine purchases  
(November to March) -  
Advance booking required  
Avenida de Diogo Leite, 344  
Vila Nova de Gaia



### Caves Fonseca

PORT WINE CELLARS  
↘ **10% DISCOUNT**

Advance booking required  
Rua do Choupelo, 84  
Vila Nova de Gaia



### Cockburn's Port

PORT WINE CELLARS  
↘ **10% DISCOUNT**

on visits and wine purchases  
Advance booking required  
Rua Serpa Pinto, 346  
Vila Nova de Gaia



### Graham's

PORT WINE CELLARS  
↘ **10% DISCOUNT**

on visits and wine purchases  
Advance booking required  
Rua Rei Ramiro, 514  
Vila Nova de Gaia



### Taylor's

PORT WINE CELLARS  
↘ **10% DISCOUNT**

audio-guided tours  
Advance booking required  
Rua do Choupelo, 250  
Vila Nova de Gaia



### Quinta do Seixo

WINE TOURISM / WINE PRODUCERS

↘ **30% DISCOUNT**

FROM NOVEMBER TO MARCH

↘ **10% DISCOUNT**

FROM APRIL TO OCTOBER

Advance booking required  
Tabuaço, Valença do Douro

+351 254 732 800



### Quinta de Santa Cristina

WINE TOURISM / WINE PRODUCERS

↘ **10% DISCOUNT**

visit to the winery and  
wine tasting

Advance booking required

Rua Santa Cristina, 80

Veade, Celorico de Basto

+351 912 527 396





### Quinta do Panascal

WINE TOURISM / WINE PRODUCERS

➤ **10% DISCOUNT**

Advance booking required  
Valença do Douro

+351 254 732 321



### Quinta da Roêda

WINE TOURISM / WINE PRODUCERS

➤ **10% DISCOUNT**

Advance booking required  
Pinhão, Douro

+351 220 109 830



### DOP

SIGNATURE CUISINE

➤ **15% DISCOUNT**

at lunch (except executive menu)

Largo de São Domingos, 18



### Hard Rock Cafe

AMERICAN FOOD

➤ **12% DISCOUNT**

meals only, without alcoholic drinks

➤ **10% DISCOUNT**

at rock shop

Rua do Almada, 120



### IVDP, I.P.

WINE TASTINGS

➤ **25% DISCOUNT**

on tours and wine tastings

➤ **15% DISCOUNT**

on articles from the shop

Rua Ferreira Borges, 27



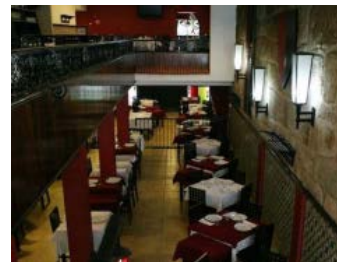
### Sala de Provas Vinhos de Portugal

WINE TASTINGS

➤ **20% DISCOUNT**

on wine tastings and enocards above 5€

Rua das Flores, 10



### Abadia

SIGNATURE CUISINE

➤ **10% DISCOUNT**

Rua do Ateneu Comercial do Porto, 22-24

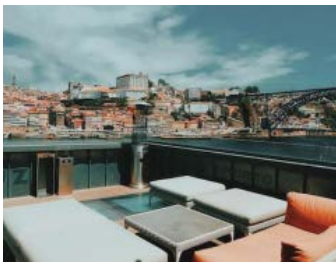


### Chinês

ASIAN FOOD

➤ **10% DISCOUNT**

Avenida de Vimeres Peres, 38



### Espaço Porto Cruz

WINE TASTINGS

➤ **10% DISCOUNT**

on tastings and purchase of port wines and cocktails 2 for 1  
Largo Miguel Bombarda, 23  
Vila Nova de Gaia



### Bistrô Flores

SIGNATURE CUISINE

➤ **10% DISCOUNT**

Rua das Flores, 27

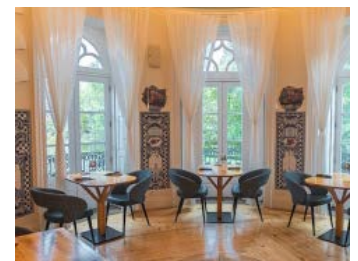


### WOW World Of Wine

MISCELLANEOUS

➤ **10% DISCOUNT**

Rua do Choupelo, 39



### Subenshi

ASIAN FOOD

➤ **10% DISCOUNT**

(except menu) + welcome drink  
Praça Parada Leitão, 13



### Lado B

FRANCESINHAS

➤ **10% DISCOUNT**

Rua de Passos Manuel, 192



### Il Basilico

ITALIAN FOOD

➤ **10% DISCOUNT**

Rua Sá da Bandeira, 84



### Café Aviz

FRANCESINHAS

➤ **10% DISCOUNT**

Rua de Aviz, 27





### Chez Lapin

PORTUGUESE FOOD  
↘ **10% DISCOUNT** cash  
↘ **5% DISCOUNT** card  
Rua dos Canasteiros, 40-42



### De Castro Gaia Espaço Porto Cruz

PORTUGUESE FOOD  
↘ **10% DISCOUNT**  
on individual spending  
above 10€  
Largo Miguel Bombarda, 23  
Vila Nova de Gaia



### Postigo do Carvão

PORTUGUESE FOOD  
↘ **10% DISCOUNT** cash  
↘ **5% DISCOUNT** card  
Rua da Fonte Taurina, 24



### Vitorino

PORTUGUESE FOOD  
↘ **10% DISCOUNT** cash  
↘ **5% DISCOUNT** card  
Rua dos Canasteiros, 48



### Costume Bistrô

PORTUGUESE FOOD  
↘ **15% DISCOUNT**  
Travessa dos Congregados, 17



### Guarany

PORTUGUESE FOOD  
↘ **10% DISCOUNT**  
on lunch and dinner  
Avenida dos Aliados, 85-89



### Prêgar

PORTUGUESE FOOD  
↘ **10% DISCOUNT**  
Largo de São Domingos, 96



### Vinhas D'Alho

PORTUGUESE FOOD  
↘ **10% DISCOUNT**  
Muro dos Bacalhoeiros, 139



### Culto ao Bacalhau

PORTUGUESE FOOD  
↘ **15% DISCOUNT**  
à la carte for up to 4 people  
(lunch menu not included)  
Mercado do Bolhão



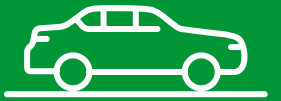
### O Caçula

PORTUGUESE FOOD  
↘ **10% DISCOUNT**  
Praça Carlos Alberto, 47



### Restaurante Lóios 80

PORTUGUESE FOOD  
↘ **15% DISCOUNT**  
Largo dos Lóios, 80



**TRANSFERS**



### Fish Fixe

PORTUGUESE FOOD  
↘ **10% DISCOUNT**  
Rua da Lada, 24  
Cais da Ribeira



### O Escondidinho

PORTUGUESE FOOD  
↘ **10% DISCOUNT**  
Rua de Passos Manuel, 142



### Cervejaria Brasão Aliados / Coliseu

FRANCESINHAS  
↘ **10% DISCOUNT**  
Rua Ramalho Ortigão, 28  
/ Rua Passos Manuel, 205



### ANETours

SHUTTLE  
↘ **15% DISCOUNT**  
☎ +351 229 942 667



### Efun Tours

PRIVATE SHUTTLE  
↘ **15% DISCOUNT**  
☎ +351 914 173 671





## BARS AND NIGHTCLUBS



**Tendinha dos Clérigos**

NIGHTCLUB  
↘ **10% DISCOUNT**  
Rua do Conde de Vizela, 80



**Chocolataria Equador**

CHOCOLATES  
↘ **10% DISCOUNT**  
Rua Sá da Bandeira 637  
/ Rua das Flores 298  
/ Rua do Dr. Sousa Viterbo, 42



**David Rosas**

JEWELRY  
↘ **10% DISCOUNT**  
(except watches)  
Avenida da Boavista, 1471



**La Bohème**

BAR  
↘ **10% DISCOUNT**  
Rua Galeria de Paris, 40



## SHOPS



**Zinda Atelier**

HANDYCRRAFTS  
↘ **10% DISCOUNT**  
Rua Ferreira Borges, 63  
/ Rua de Santana, 36



**Urban Distillery & Gin School**

THEME CENTER  
↘ **10% DISCOUNT**  
Praça da Corujeira, 158



**Fé Wine & Club**

BAR  
↘ **10% DISCOUNT**  
on port wine and gin  
Praça D. Filipa de Lencastre, 1



**Casa da Arquitectura**

MISCELLANEOUS  
↘ **10% DISCOUNT**  
Avenida Menéres, 456  
4450-189 Matosinhos



**Ergovisão**

MISCELLANEOUS  
↘ **25% DISCOUNT**  
on optical and eyewear shop  
Rua de Passos Manuel, 22



**Touriga Vinhos de Portugal**

WINE SHOPS  
↘ **10% DISCOUNT**  
Rua da Fábrica, 32



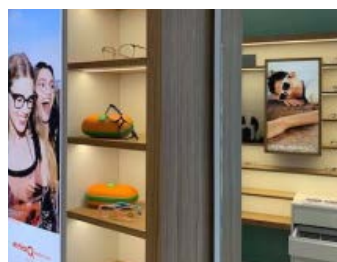
**HD Bar To Be Wild**

BAR  
↘ **10% DISCOUNT**  
Rua Galeria de Paris, 113



**Flores Creative Concept Store**

HANDYCRRAFTS  
↘ **10% DISCOUNT**  
Rua das Flores, 270



**Óptica da Baixa**

MISCELLANEOUS  
↘ **15% DISCOUNT**  
on sunglasses  
Rua Chã, 66



**The North Face Porto**

MISCELLANEOUS  
↘ **10% DISCOUNT**  
Praça da Trindade, 138





### Confeitaria Arcádia

HANDMADE PASTRIES AND CHOCOLATES  
➤ **10% DISCOUNT**  
Avenida da Boavista, 1046 / Centro Comercial Cidade do Porto - Livraria Bertrand / Mercado Bom Sucesso / Campus S. João / Mercado Bom Sucesso



### Artesanato dos Clérigos

HANDYCRRAFTS  
➤ **10% DISCOUNT** cash  
➤ **5% DISCOUNT** card  
Rua da Assunção, 33-34



### House of Filigree

JEWELRY  
➤ **10% DISCOUNT**  
Rua do Almada, 10



### Panamar Concept Store

MISCELLANEOUS  
➤ **10% DISCOUNT**  
Rua Mouzinho da Silveira, 14



### Hard Rock Cafe

LEATHER GOODS  
➤ **10% DISCOUNT** cash  
➤ **5% DISCOUNT** card  
Rua Guilherme Costa Carvalho, 29



### Garrafeira do Carmo

WINE SHOPS  
➤ **5% DISCOUNT** on port or DOC wines (only on purchases of 50€ or more; cannot be combined with other campaigns currently running)  
Rua do Carmo, 17



### Gelataria Arcádia

ICE CREAM SHOPS  
➤ **10% DISCOUNT**  
Avenida da Boavista, 1046 / Mercado Bom Sucesso



### Palácio da Bolsa Shop

MISCELLANEOUS  
➤ **10% DISCOUNT**  
Rua Ferreira Borges, 101



### Vila do Conde Fashion Outlet

OUTLET  
➤ **10% DISCOUNT** on VIP Day Pass at selected stores - get it at information centre  
Avenida Fonte Cova, 400 Modivas, Vila do Conde



### Conservas Minerva

MISCELLANEOUS  
➤ **10% DISCOUNT** on canned goods  
Rua de Fernandes Tomás, 685



### Gelataria La Copa

ICE CREAM SHOPS  
➤ **15% DISCOUNT**  
Avenida Rodrigues de Freitas, 366



### Confeitaria Arcádia

CHOCOLATES  
➤ **10% DISCOUNT** on bombons / sweets and sugar almonds  
Rua de Santa Catarina, 191 / Rua do Almada, 63



### Casa Lima

LEATHER GOODS  
➤ **10% DISCOUNT** cash  
➤ **5% DISCOUNT** card  
Rua Guilherme Costa Carvalho, 29



### Casas das Tortas

HANDMADE PASTRIES AND CHOCOLATES  
➤ **10% DISCOUNT**  
Rua de Passos Manuel, 181





## THEATRES, HALLS AND SHOWS



### Teatro Municipal Campo Alegre

THEATRE AND SHOWS  
↘ **50% DISCOUNT**  
Rua das Estrelas



### Porto Legends

INTERACTIVE SHOW  
**Full ticket at reduced ticket price** (single ticket or double packs)  
**Reduced ticket at family ticket price** (single ticket or double packs)  
Furnas da Alfândega do Porto



### Casa da Cerveja Super Bock

THEME CENTRE  
↘ **40% DISCOUNT**  
Via Norte 4465-764  
Matosinhos



### Casa da Música

SHOWS  
↘ **25% DISCOUNT**  
(only at Casa da Música symphony orchestra concerts)  
Avenida da Boavista, 604-610



### Rivoli Teatro Municipal

THEATRE AND SHOWS  
↘ **50% DISCOUNT**  
Praça D. João I



### Fado in Porto Caves Calem

FADO SHOW  
↘ **2€ DISCOUNT**  
Avenida de Diogo Leite, 344  
Vila Nova de Gaia



### World of Discoveries

THEME CENTRE  
↘ **35% DISCOUNT**  
(individual tickets only)  
Rua de Miragaia, 106



### Teatro Carlos Alberto (TECA)

THEATRE AND SHOWS  
↘ **50% DISCOUNT**  
Rua das Oliveiras, 43



### Teatro de Marionetas do Porto

THEATRE  
↘ **20% DISCOUNT**  
Rua do Belmonte, 57



### Restaurante RC

FADO WITH DINNER  
↘ **10% DISCOUNT**  
Rua Infante D. Henrique, 77-79



### Urban Distillery & Gin School

THEME CENTRE  
↘ **15% DISCOUNT**  
Praça da Corujeira, 158



### Mosteiro de São Bento da Vitória

SHOWS  
↘ **50% DISCOUNT**  
Rua de São Bento da Vitória



### Casa da Guitarra

FADO SHOW  
↘ **10% DISCOUNT**  
Avenida de Vimara Peres, 49



## OTHER EXPERIENCES



### Water Pavilion

THEME CENTRE  
↘ **15% DISCOUNT**  
Estrada da Circunvalação, 15443





### Conservas Pinhais Factory Tour

THEME CENTRE  
↘ **15% DISCOUNT**  
and a glass of wine  
Avenida Menéres, 700  
4450 Matosinhos



### Zoo Santo Inácio

THEME CENTRE  
↘ **25% DISCOUNT**  
for individual tickets only  
Rua 5 de Outubro, 4503  
Avintes, Vila Nova de Gaia



### Porto Exit Games Escape Games

ENTERTAINMENT ROOM  
↘ **10% DISCOUNT**  
(minimum two people)  
Praça Guilherme Gomes  
Fernandes, 53 1º andar Fr



### Choice Car

CARS  
↘ **20% DISCOUNT**  
☎ +351 220 102 268



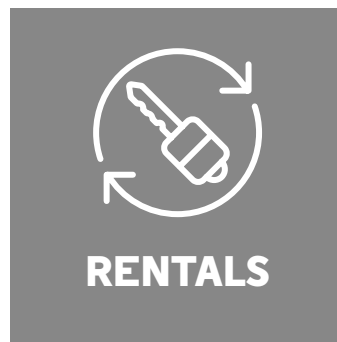
### Porto Exit Games Escape Games

ENTERTAINMENT ROOM  
↘ **10% DISCOUNT**  
(minimum two people)  
Praça Guilherme Gomes  
Fernandes, 53 1º andar Fr



### SEA LIFE Porto

THEME CENTRE  
↘ **20% DISCOUNT**  
1ª Rua Particular  
Via do Castelo do Queijo



### RENTALS



### Vieguini

BIKES AND SCOOTERS  
RENTAL  
↘ **10% DISCOUNT**  
☎ +351 914 306 838



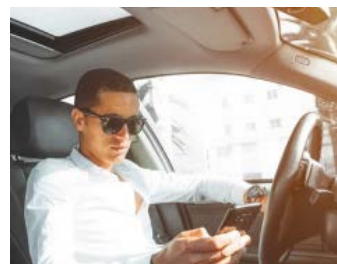
### Viral Virtual Reality

ENTERTAINMENT ROOM  
↘ **10% DISCOUNT** cash  
↘ **5% DISCOUNT** card  
Rua Augusto Luso, 126



### WOW World Of Wine

THEME CENTRE  
↘ **10% DISCOUNT**  
(individual tickets only)  
Rua do Choupelo, 39



### Turisrent

CARS  
↘ **20% DISCOUNT**  
☎ +351 936 729 073



### The Getaway Van

MOTORHOMES  
↘ **10% DISCOUNT**  
lowcost motorhome rental  
(includes airport transfer)  
☎ +351 925 324 341



### Casa da Arquitectura

THEME CENTRE  
↘ **25% DISCOUNT**  
Avenida Menéres, 456  
4450-189 Matosinhos



### Biclas & Triclas

BIKES AND SCOOTERS  
RENTAL  
↘ **10% DISCOUNT**  
☎ +351 933 658 008



### ANETours

CARS  
↘ **15% DISCOUNT**  
cars with tourism driver  
☎ +351 229 942 667



**P** TURISMO  
**NORTE**  
**O**

PORTUGAL  
ORIGEM  
E ORIGINAL